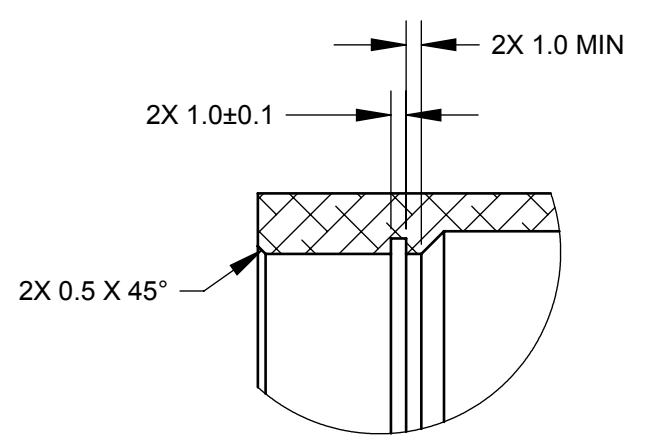
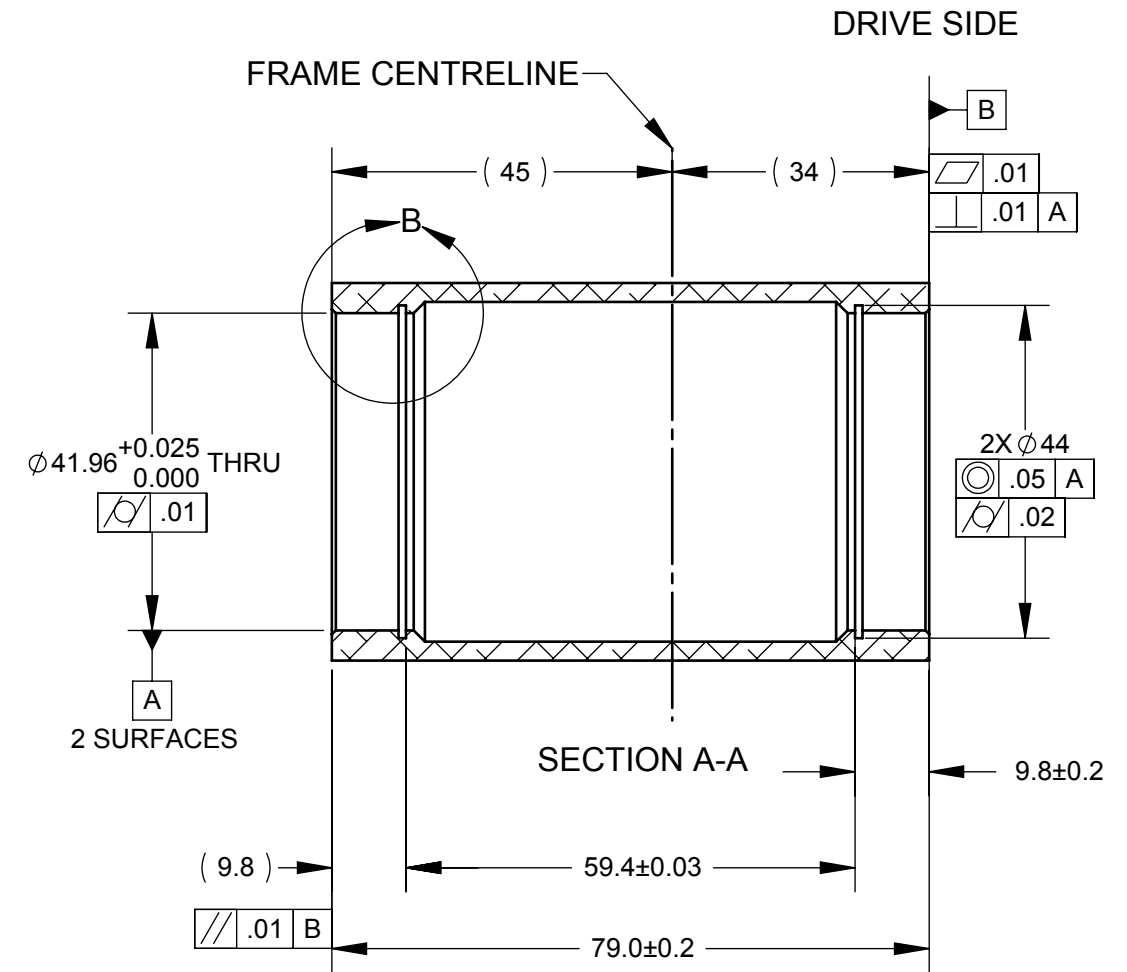
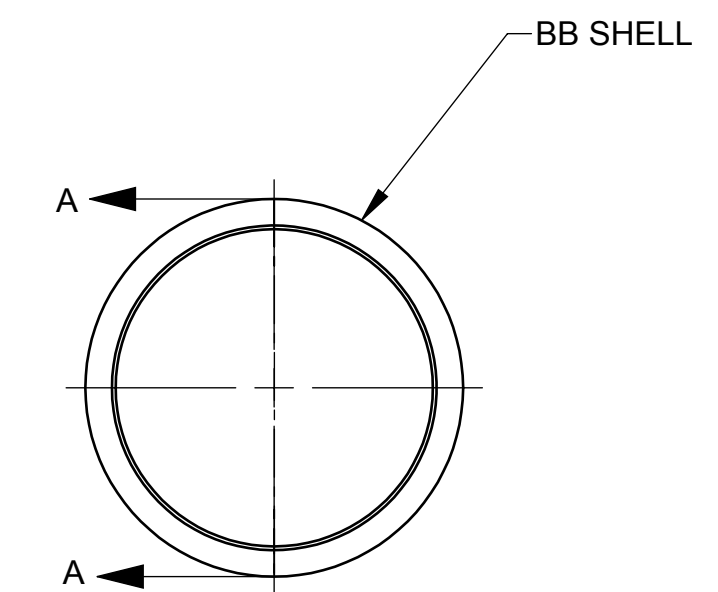


- NOTES:**
1. DIMENSIONS APPLY AFTER ALL MANUFACTURING PROCESSES
 2. ONLY CRITICAL BB GEOMETRY SHOWN. IT IS UP TO THE MANUFACTURER TO DESIGN FRAME APPROPRIATELY
 3. USE CIRCLIPS SMALLEY VHM-42 OR EQUIVALENT

REVISION HISTORY OF 00182601			
REV.	DESCRIPTION	DATE	APPROVED
01	RELEASED	07/21/2010	RM

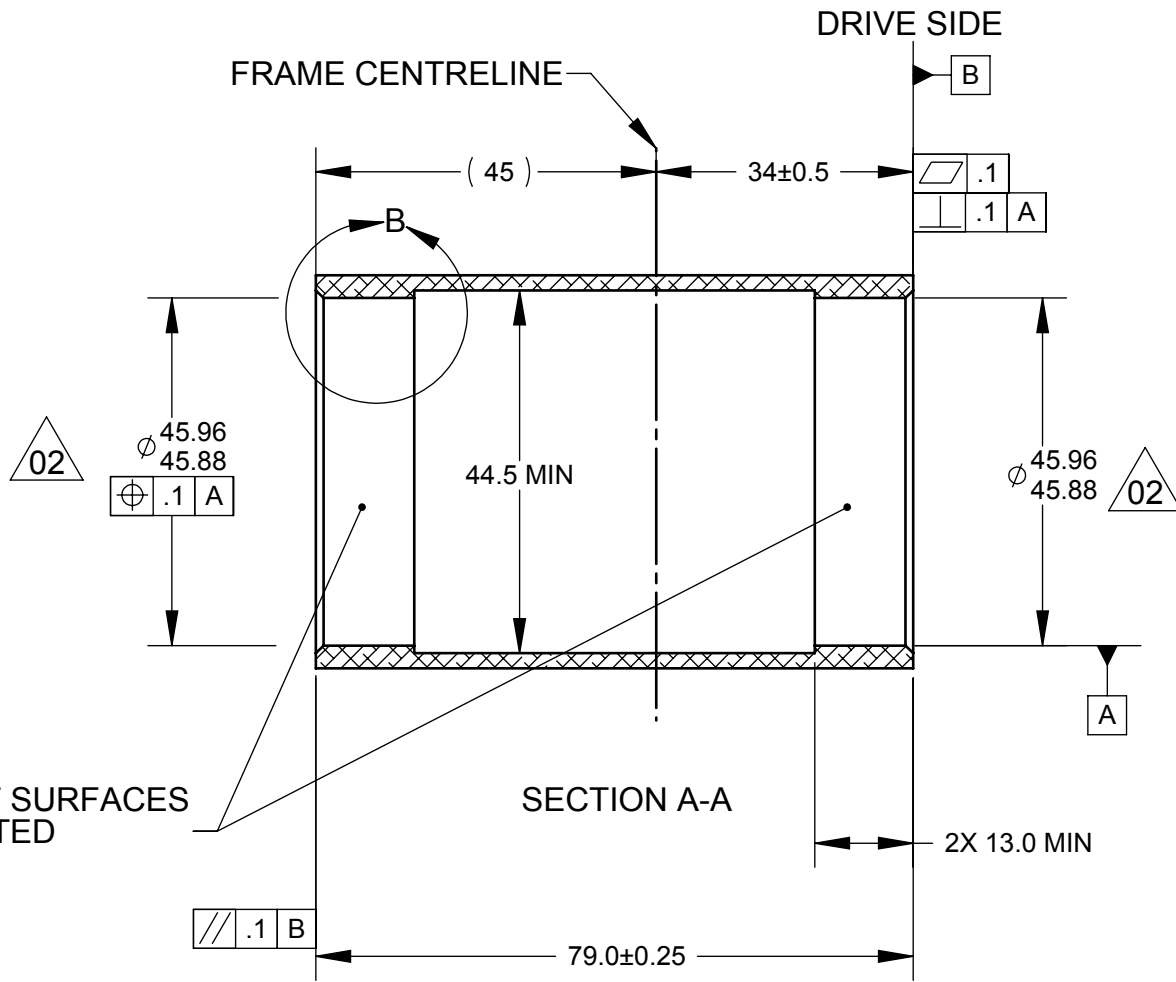
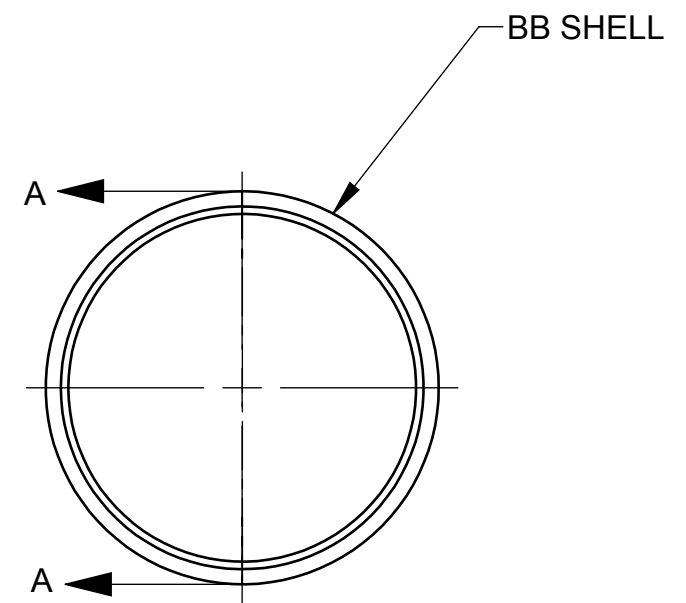


DETAIL B
SCALE 2 : 1

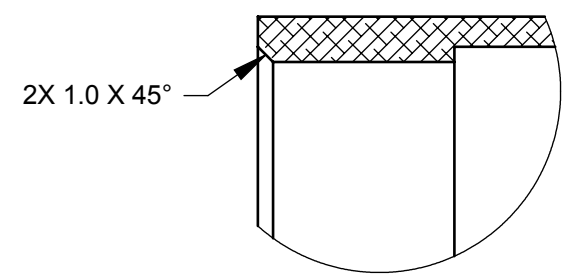
PROJECT: FM42		ALL UNITS IN MILLIMETRES			VROOMEN.WHITE.DESIGN 171 East Liberty Street, Unit 222, Toronto, ON M6K 3P6															
PROPRIETARY NOT TO BE DISCLOSED OR REPRODUCED IN ANY MANNER WITHOUT THE EXPRESS WRITTEN PERMISSION OF VROOMEN WHITE DESIGN		UNLESS OTHERWISE SPECIFIED INTERPRET DIMENSIONS AND TOLERANCES PER ASME Y14.5M-1994 ALL DIMENSIONS SHOWN APPLY BEFORE PLATINGS AND COATINGS TOLERANCES APPLY AS SHOWN BELOW																		
THIRD ANGLE PROJECTION		<table border="1"> <thead> <tr> <th>DECIMAL PLACES</th> <th>INCHES</th> <th>MILLIMETRES</th> </tr> </thead> <tbody> <tr> <td>.XXX</td> <td>± .005</td> <td>± 0.1</td> </tr> <tr> <td>.XX</td> <td>± .010</td> <td>± 0.3</td> </tr> <tr> <td>.X</td> <td>± .020</td> <td>± 0.5</td> </tr> </tbody> </table>			DECIMAL PLACES	INCHES	MILLIMETRES	.XXX	± .005	± 0.1	.XX	± .010	± 0.3	.X	± .020	± 0.5	PART DESCRIPTION		REVISION	
DECIMAL PLACES	INCHES	MILLIMETRES																		
.XXX	± .005	± 0.1																		
.XX	± .010	± 0.3																		
.X	± .020	± 0.5																		
APPROVALS		ANGULAR DIMENSIONS			BBRight - Direct Fit Version		00182601 01													
DRAWN BY	R.Mathews	XX° ±0.5° XX.X° ±0.1°			SIZE		PART NUMBER													
CHECKED BY	D.Rinard	SURFACE ROUGHNESS			B		SCALE 1:1 MASS 91.46													
APPROVAL DATE	2008/12/11	MICROINCH 63 MICRON 1.6			SHEET 1 OF 1															

NOTES:
 1. DIMENSIONS APPLY AFTER ALL MANUFACTURING PROCESSES
 2. ONLY CRITICAL BB GEOMETRY SHOWN. IT IS UP TO THE MANUFACTURER TO DESIGN FRAME APPROPRIATELY

REVISION HISTORY OF 00212601			
REV.	DESCRIPTION	DATE	APPROVED
01	RELEASED	2010/07/21	RM
02	UPDATED BORE TOLERANCES	2010/09/09	RM



BEARING PRESS FIT SURFACES TO REMAIN UNPAINTED



DETAIL B
SCALE 2 : 1

PROJECT: FM82		ALL UNITS IN MILLIMETRES			VROOMEN.WHITE.DESIGN 171 East Liberty Street, Unit 222, Toronto, ON M6K 3P6														
PROPRIETARY NOT TO BE DISCLOSED OR REPRODUCED IN ANY MANNER WITHOUT THE EXPRESS WRITTEN PERMISSION OF VROOMEN WHITE DESIGN		UNLESS OTHERWISE SPECIFIED INTERPRET DIMENSIONS AND TOLERANCES PER ASME Y14.5M-1994 ALL DIMENSIONS SHOWN APPLY BEFORE PLATINGS AND COATINGS TOLERANCES APPLY AS SHOWN BELOW																	
THIRD ANGLE PROJECTION		<table border="1"> <thead> <tr> <th>DECIMAL PLACES</th> <th>INCHES</th> <th>MILLIMETRES</th> </tr> </thead> <tbody> <tr> <td>.XXX</td> <td>± .005</td> <td>± 0.1</td> </tr> <tr> <td>.XX</td> <td>± .010</td> <td>± 0.3</td> </tr> <tr> <td>.X</td> <td>± .020</td> <td>± 0.5</td> </tr> </tbody> </table>			DECIMAL PLACES	INCHES	MILLIMETRES	.XXX	± .005	± 0.1	.XX	± .010	± 0.3	.X	± .020	± 0.5	PART DESCRIPTION		
DECIMAL PLACES	INCHES	MILLIMETRES																	
.XXX	± .005	± 0.1																	
.XX	± .010	± 0.3																	
.X	± .020	± 0.5																	
APPROVALS		ANGULAR DIMENSIONS			BBRight - Press Fit Version														
DRAWN BY	R.Mathews	<table border="1"> <thead> <tr> <th>XX°</th> <th>±0.5°</th> </tr> <tr> <th>XX.X°</th> <th>±0.1°</th> </tr> </thead> <tbody> <tr> <td>SURFACE ROUGHNESS</td> <td>MICROINCH 63</td> <td>MICRON 1.6</td> </tr> </tbody> </table>			XX°	±0.5°	XX.X°	±0.1°	SURFACE ROUGHNESS	MICROINCH 63	MICRON 1.6	SCALE: 1:1 MASS: 76.98							
XX°	±0.5°																		
XX.X°	±0.1°																		
SURFACE ROUGHNESS	MICROINCH 63	MICRON 1.6																	
CHECKED BY	D.Rinard	APPROVAL DATE: 2010/03/26			SHEET 1 OF 1														
APPROVALS NAME: R.Mathews SIGNATURE:		APPROVALS NAME: D.Rinard SIGNATURE:			REVISION: 00212601 02														